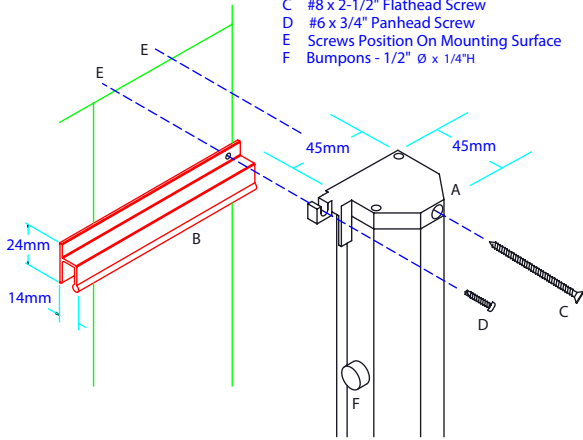


# Phantom Door Design Specifications

## (External Assembled View)

Parts Spec

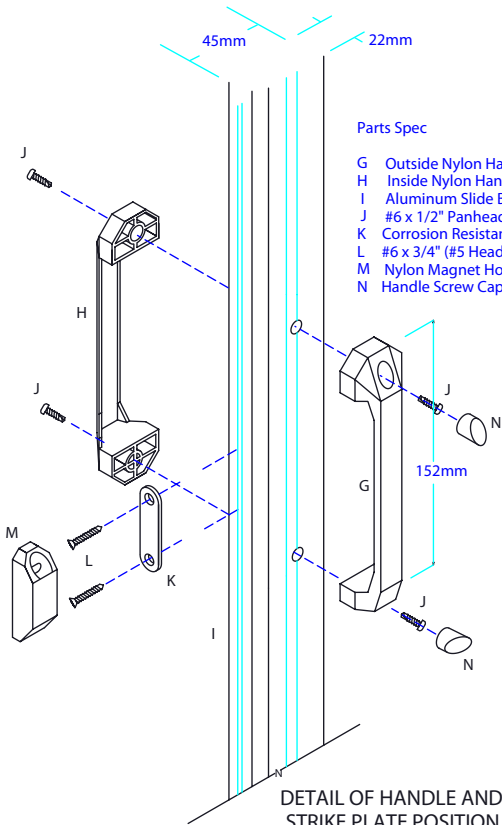
- A Aluminum Housing c/w Nylon End Cap
- B Aluminum Track
- C #8 x 2-1/2" Flathead Screw
- D #6 x 3/4" Panhead Screw
- E Screws Position On Mounting Surface
- F Bumpons - 1/2"  $\varnothing$  x 1/4"H



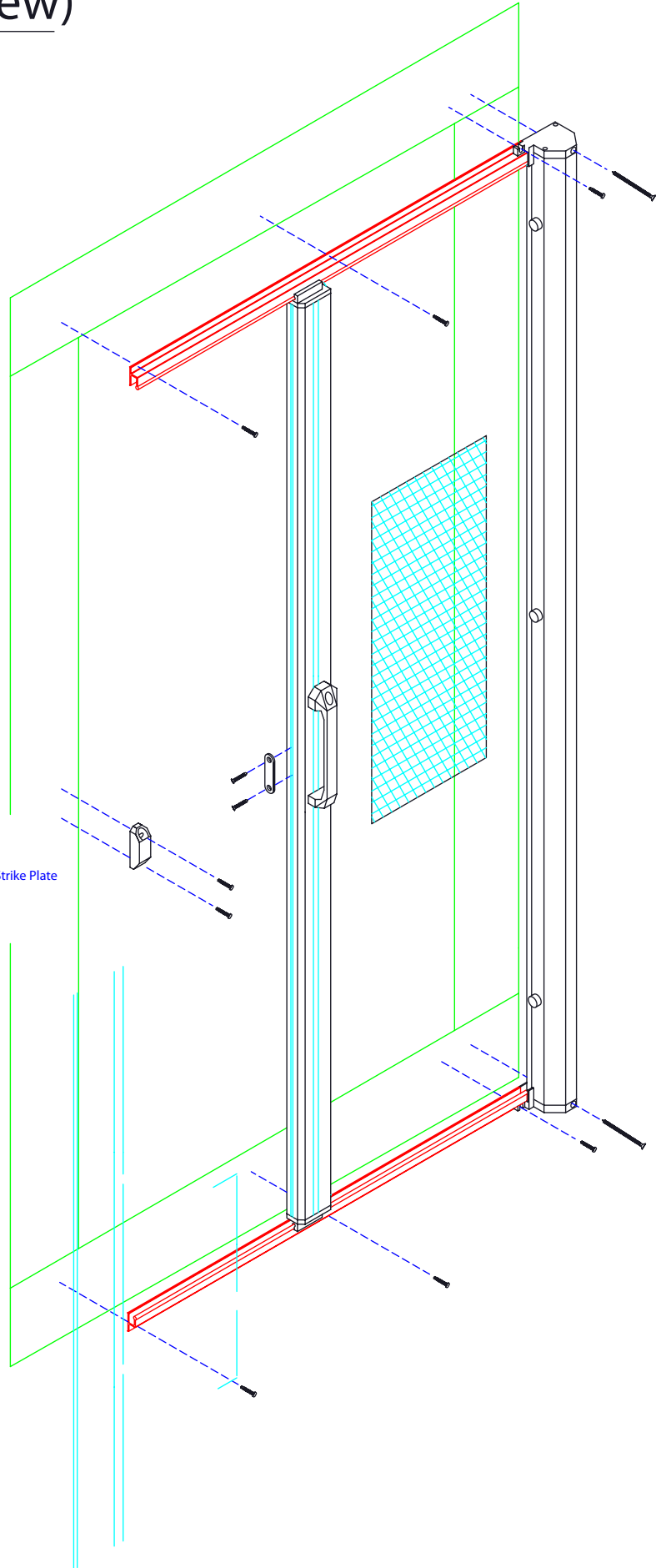
DETAIL OF TRACK POSITION  
IN RELATION  
TO THE HOUSING AND HOUSING END CAP  
(HEAD VIEW)

Parts Spec

- G Outside Nylon Handle V2
- H Inside Nylon Handle V2
- I Aluminum Slide Bar
- J #6 x 1/2" Panhead TEK Screw
- K Corrosion Resistant Steel Magnet Strike Plate
- L #6 x 3/4" (#5 Head) Flathead Screw
- M Nylon Magnet Housing
- N Handle Screw Caps (2 Per Handle)



DETAIL OF HANDLE AND  
STRIKE PLATE POSITION  
IN RELATION  
TO THE SLIDE BAR



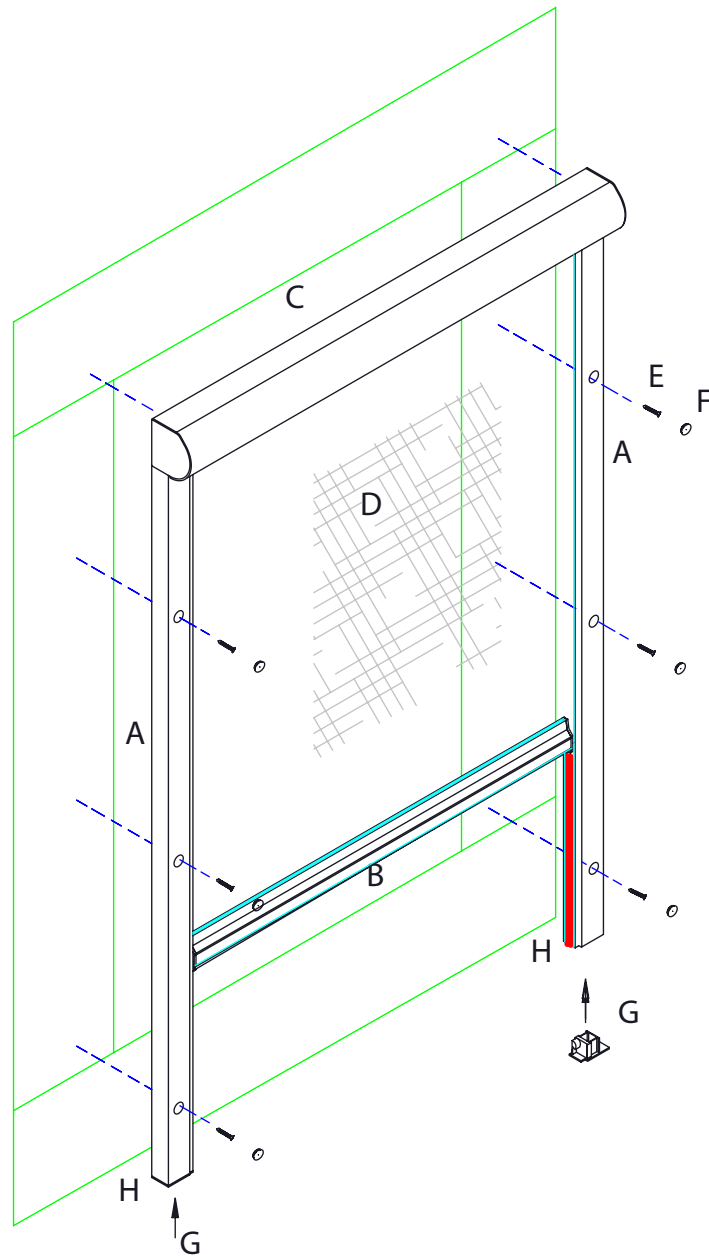
# Serene Design Specifications

## ( External Assembled View )

For Illustration Purposes Only - Not Drawn to Scale

### Parts Spec

- A Aluminum Track  
Standard Version - 22mm(d) x 35mm(w)  
Small Version - 22mm(d) x 24mm(w)
- B Aluminum Slide Bar  
19mm(d) x 35mm(h)
- C Aluminum Housing Assembly  
53mm(d) x 57mm(h)
- D PVC Coated Fiberglass Mesh
- E #6 x 3/4" (#5 Head) Flathead Screw
- F Track Screw Hole Cover
- G Track Latch
- H Mesh Retention Pile - Inside  
Full Track Length (Both Sides)



All components are color matched except the Mesh.